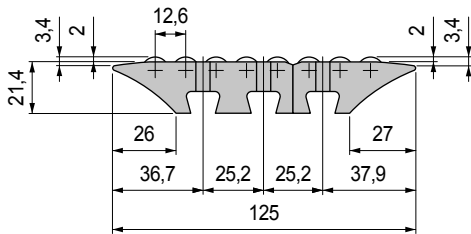
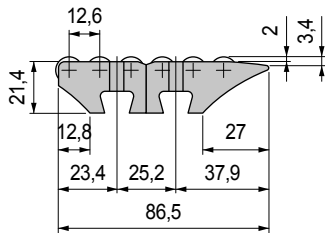


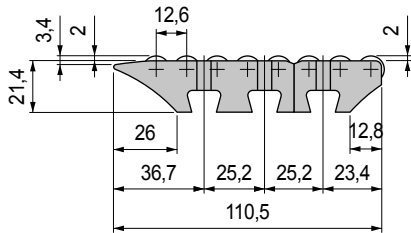
• Assembly Part. S0847 - S0848



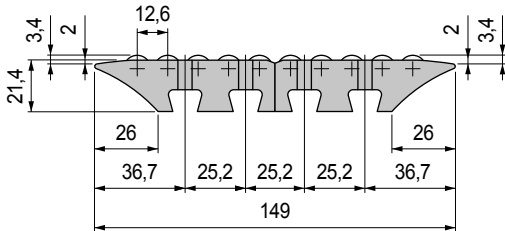
• Assembly Part. S0847 - S0849



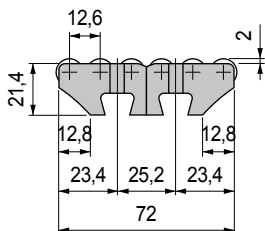
• Assembly Part. S0848 - S0849



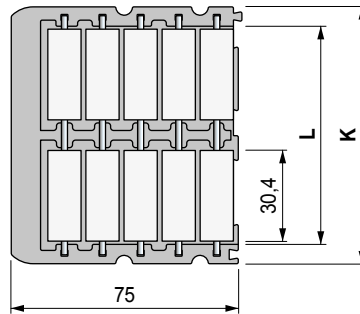
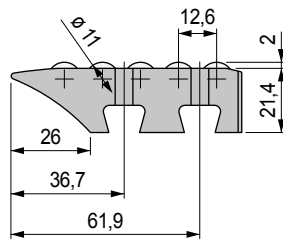
• Assembly Part. S0848 - S0848



• Assembly Part. S0849 - S0849



■ End transfer module (with lip)



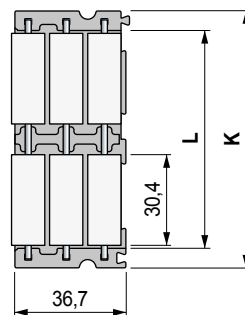
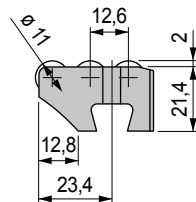
K mm	L mm	Code	Weight kg
85	72	645633	0,099
115	102	645643	0,135

- Material: frame in acetal Rex-HP™ (dark grey) very low coefficient of friction, rollers in acetal POM (white). Roller pins in austenitic stainless steel.
- Modularity: snap-on assembly with Part. S0846 - S0847 - S0849.
- Packaging: 10 pieces.

Part. **S0848**



■ End transfer module



K mm	L mm	Code	Weight kg
85	72	645613	0,056
115	102	645623	0,077

- Material: frame in acetal Rex-HP™ (dark grey) very low coefficient of friction, rollers in acetal POM (white). Roller pins in austenitic stainless steel.
- Modularity: snap-on assembly with Part. S0846 - S0847 - S0848.
- Packaging: 10 pieces.

Part. **S0849**



● Best Seller

● Standard

● On request: minimum quantity may apply. Consult our Customer Service for availability.

Item code for order = Part. + Code